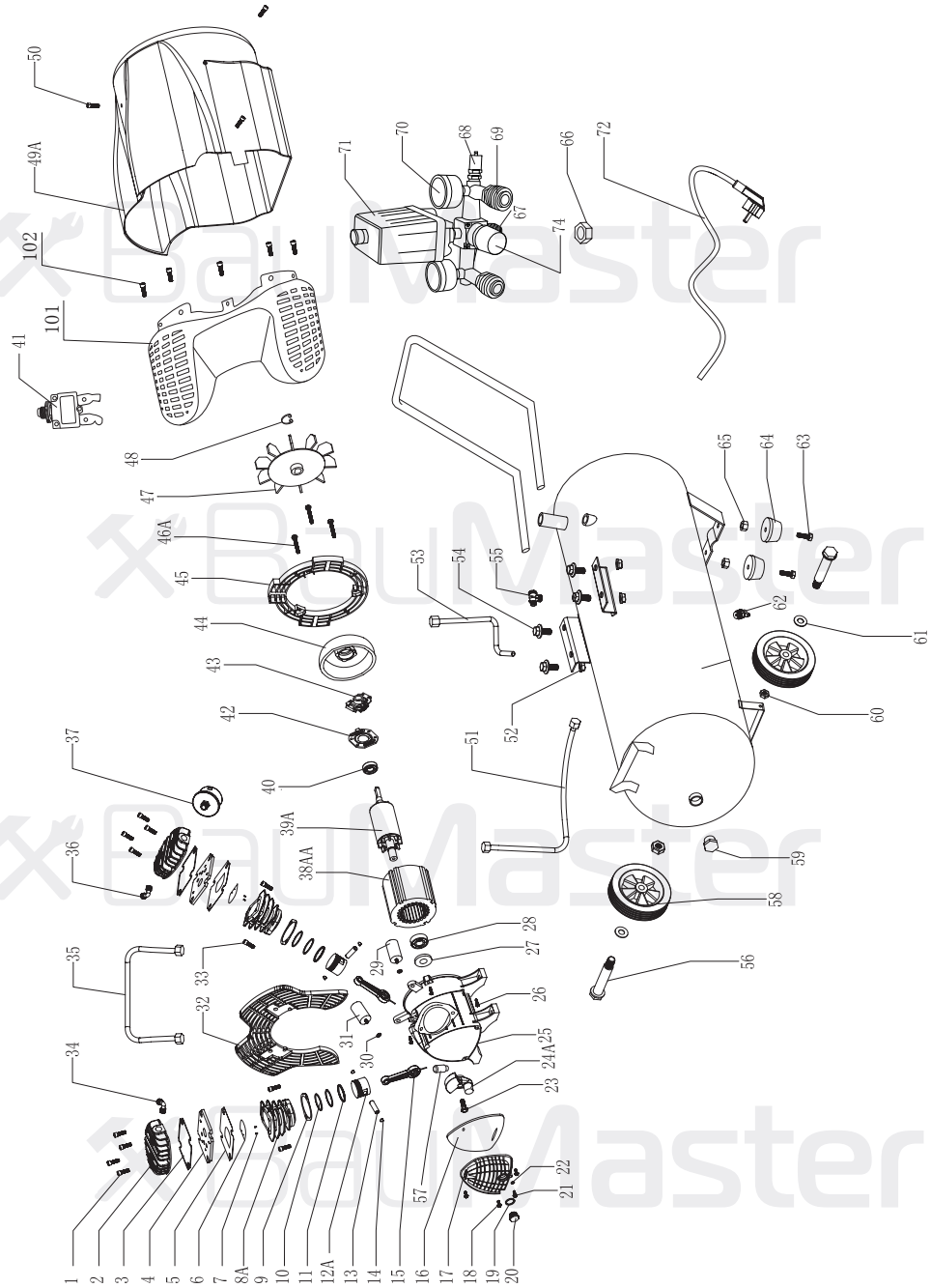


AC-94100X

NO.	DESCRIPTION	NO.	DESCRIPTION
1	BOLT M6X40	39A	ROTOR
2	CYLINDER HEAD	40	BEARING 6205
3	"O" RING	41	OVER LOAD PROTECTOR
4	VALVE PLATE	42	SWITCH BASE
5	VALVE PLATE GASKET	43	CENTRIFUGAL SWITCH
6	VALVE CLACK	44	MOTOR COVER
7	PIN	45	PLASTIC BACK SHIELD
8A	CYLINDER	46A	BOLT M6X30
9	CYLINDER GASKET	47	FAN
10	PISTON RING	48	CIRCLIP
11	OIL WREATH	49A	FAN COVER ASSEMBLE
12A	PISTON	50	BOLT ST4.8X16
13	PISTON PIN	51	HIGH PRESSURE TUBE
14	CIRCLIP	52	NUT M8
15	CONNECTING ROD	53	RELEASE PIPE
16	RUBBER GASKET	54	BOLT M8X25
17	CRANK CASE COVER	55	ONE-WAY VALVE
18	BOLT	56	AXLE
19	OIL LEVEL GASKET	57	BREATH PIPE
20	OIL LEVEL	58	WHEEL
21	BOLT	59	JAM HEAD
22	"O" CIRCLIP	60	NUT M10
23	HEX BOLT M8X22(LEFT)	61	WASHER
24A	CRANK	62	DRAIN COCK
25	CRANK CASE	63	BOLT M8X25
26	BOLT M6X40	64	RUBBER FEET
27	SEALING RING	65	NUT M8
28	BEARING 6205	66	NUT
29	START CAPACITOR	67	SWITCH SUPPORT
30	NUT M8	68	SAFE VALVE
31	OPERATION CAPACITOR	69	QUICK COUPLERS
32	PLASTIC SHIELD	70	PRESSURE GAUGE
33	BOLT M8X25	71	PRESSURE SWITCH
34	RIGHT ANGLE CONNECTOR	72	CABLE & PLUG
35	CONNECT PIPE	74	REGULATE VALVE
36	THREE HEAD CONNECTOR	101	CYLINDER HEAD COVER
37	AIR FILTER	102	SCREW
38AA	STATOR & HOUSING		



SO20130320